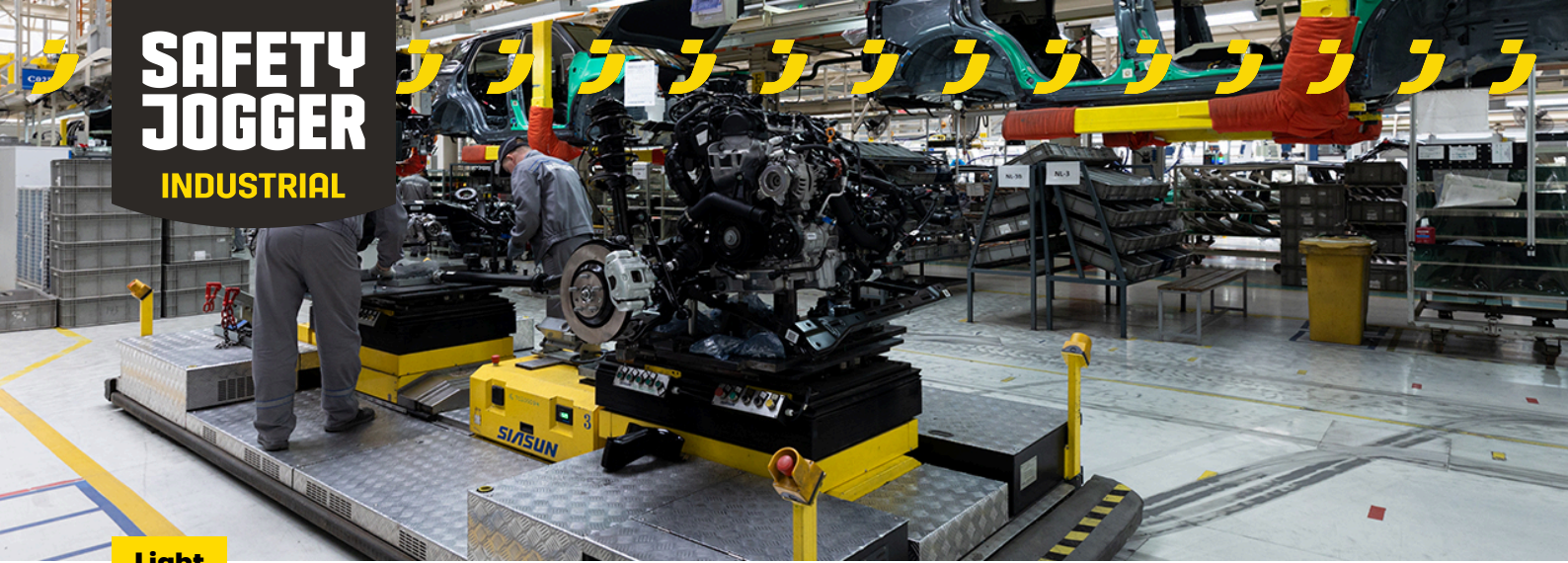


# SAFETY JOGGER

## INDUSTRIAL



Light

## AAK S1P LOW S1 PS

AAKS1PLOW

### Comfortable wide-fitting sneaker style

Light like space, strong like a rock. Our lightweight AAK S1P safety sneakers are completely metal free, with a puncture-resistant lightweight midsole and a composite toe cap. They feature ESD, a slip-resistant rubber outsole and a breathable upper. AAK S1P offers an extra wide fitting and is suitable for light applications in dry environments.

Upper	Synthetic, Textile
Lining	Mesh
Footbed	SJ foam footbed
Midsole	Anti-puncture Textile
Outsole	Phylon/Rubber
Toecap	Composite
Category	S1 PS / SR, ESD, FO, HRO
Size range	EU 35-48 / UK 3.0-13.0 / US 3.0-13.5 JPN 21.5-31.5 / KOR 230-315
Sample weight	0.490 kg
Norms	ASTM F2413:2018 EN ISO 20345:2022



BLU



DBL



GRY



#### Composite toecap

Metalfree and lightweight, no thermal or electrical conductivity



#### Removable insole

Renew your insole at a regular base or use your own orthopedic insoles for a higher comfort.



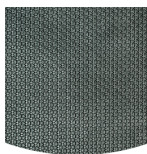
#### Slip resistance (SR)

Replaces the previously used term of SRA+SRB=SRC. SR means the slip test has been executed on tiles contaminated with soap and with oil.



#### Puncture resistant lightweight

Metal free, super flexible and ultralight puncture resistant midsole. Covers 100% of the bottom area of the last, no thermal conductivity.



#### Rubber outsole

Rubber outsoles provide versatile functions that make them suitable for many areas of application: excellent cut resistance, heat and cold resistance, high flexibility at cold temperatures, resistance against oil, fuel and many chemicals.

**Industries:**

Assembly, Automotive, Industry, Logistics

**Environments:**

Dry environment, Uneven surfaces

**Maintenance instructions:**

To extend the life of your shoes, we recommend to clean them regularly and to protect them with adequate products. Do not dry your shoes on a radiator, nor nearby a heat source.

	Description	Measure unit	Result	EN ISO 20345
<b>Upper</b>	<b>Synthetic, Textile</b>			
	Upper: permeability to water vapor	mg/cm <sup>2</sup> /h	1.2	≥ 0.8
	Upper: water vapor coefficient	mg/cm <sup>2</sup>	21	≥ 15
<b>Lining</b>	<b>Mesh</b>			
	Lining: permeability to water vapor	mg/cm <sup>2</sup> /h	34.59	≥ 2
	Lining: water vapor coefficient	mg/cm <sup>2</sup>	277	≥ 20
<b>Footbed</b>	<b>SJ foam footbed</b>			
	Footbed: abrasion resistance (dry/wet) (cycles)	cycles	Dry 25600 cycles/Wet 12800 cycles	25600/12800
<b>Outsole</b>	<b>Phylon/Rubber</b>			
	Outsole abrasion resistance (volume loss)	mm <sup>3</sup>	119.4mm <sup>3</sup> (Density:1.3)	≤ 150
	Basic Slip resistance - Ceramic + NaLS - Forward heel slip	friction	0.48	≥ 0.31
	Basic Slip resistance - Ceramic + NaLS - Backward forepart slip	friction	0.48	≥ 0.36
	SR Slip resistance - Ceramic + glycerin - Forward heel slip	friction	0.36	≥ 0.19
	SR Slip resistance - Ceramic + glycerin - Backward forepart slip	friction	0.36	≥ 0.22
	Antistatic value	MegaOhm	650	0.1 - 1000
	ESD value	MegaOhm	75	0.1 - 100
	Heel energy absorption	J	25	≥ 20
<b>Toecap</b>	<b>Composite</b>			
	Impact resistance toecap (clearance after impact 100J)	mm	NA	N/A
	Compression resistance toecap (clearance after compression 10kN)	mm	NA	N/A
	Impact resistance toecap (clearance after impact 200J)	mm	16.0	≥ 14
	Compression resistance toecap (clearance after compression 15kN)	mm	22.0	≥ 14

Sample size: 42

Our shoes are constantly evolving, the technical data above may change. All product names and brand Safety Jogger, are registered and may not be used or reproduced in any format, without written consent from us.